

Mercer+Mettle™ Women's Open Front Cardigan Sweater MM3023



Soft, comfortable, and as a transitional layer for day or night, this easy care sweater is a refined knit that won't bag out with wear. Sophisticated details like square patch pockets and a wide, rib bottom hem lend a modern sensibility to accent your unique sense of style.

Fabric+Weight

- 90/9/1 cotton/nylon/spandex

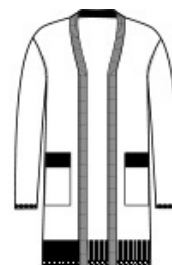
Features+Benefits

- Fully-fashioned armholes
- Square patch pockets
- Wide, rib bottom hem

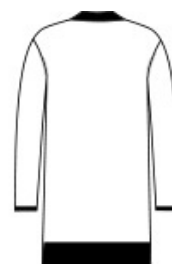
**

CARE INSTRUCTIONS

Machine Wash Cold With Like Colors. Only Non-Chlorine Bleach When Needed. Tumble Dry Low. Cool Iron If Necessary.

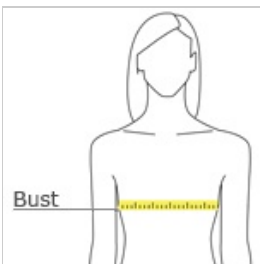


front



back

HOW TO MEASURE



BUST

Measure under the arm and around the fullest part of the bust with arms down, keeping tape horizontal.

SIZE CHART

	XS	S	M	L	XL	2XL	3XL	4XL
Size	2	4/6	8/10	12/14	16/18	20/22	24/26	28/30
Bust	32-34	35-36	37-38	39-41	42-44	45-47	48-51	52-55

COLOR INFORMATION



Birch
PMS 7534C



Deep Black
PMS BLACK C



Gusty Grey
Heather
PMS COOL GRAY
8C