

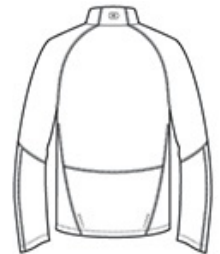


STAY-COOL WICKING  
 LAYERABLE WARMTH  
 STRETCH  
 FLATLOCK SEAMS FOR COMFORT  
 REFLECTIVE DETAILS

- 91/9 poly/spandex jersey with stay-cool wicking technology
- Lightly brushed interior
- Reflective OGIO Endurance heat transfer label for tag-free comfort
- Zip-through cadet collar with molded cord pull
- Reflective O heat transfer at back neck
- Raglan sleeves with shaped cuffs
- Drop tail hem with reflective stacked O heat transfers at lower back panels
- Reflective O Endurance heat transfer at front left hem



front

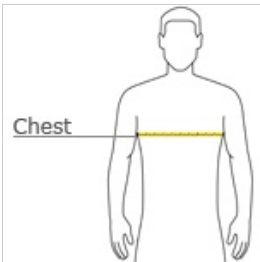


back

**CARE INSTRUCTIONS**

Machine wash cold with like colors. Do not bleach. Tumble dry low. Cool iron. Do not use fabric softener. Do not dry clean.

**HOW TO MEASURE**



**CHEST WIDTH**  
 Measure under the arm and around the fullest part of the chest with arms down, keeping tape horizontal.

**SIZE CHART**

	XS	S	M	L	XL	2XL	3XL	4XL
Chest	32-34	35-37	38-40	41-43	44-46	47-49	50-53	54-57

**COLOR INFORMATION**



Blacktop  
 PMS NTR BLACK  
 C



Electric Blue  
 PMS 7686C



Gear Grey  
 PMS 425C